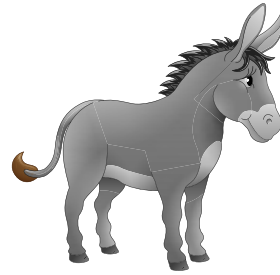
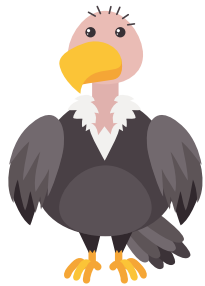


This donkey is pictured on one of
the stained glass windows.
He is doing a very important job.
What could it be?



This dragon looks very
uncomfortable!
He is close to a statue of
St George.

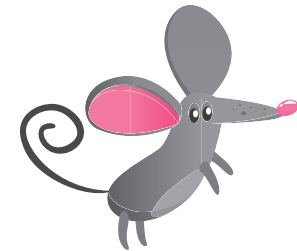


This eagle has a
very, very heavy
book on his back



St Peter's Animal Trail

See if you can find these animals as you explore the church.
Remember to tick them off as you go. Have fun!



I think this mouse
wants to get wet!
He is too close to the Font!



You will find us on a Royal Coat of
Arms. We are very fancy! We were
above you when you came in.



'Thanks to National Lottery players'.